



CADD Structures Drafting Reference Guide

TABLE OF CONTENTS

1. Introduction	3
2. MicroStation Information	4
2.1. Configuration.....	4
2.2. Resource Files	4-5
2.3. Dgnlib Files	5
2.4. Levels / Symbology	5-6
2.5. Text Styles	7-8
2.6. Dimension Styles	8
2.7. Working Units.....	8
2.8. Models.....	8
2.9. Seed Files	9-10
2.10. Cell Libraries	10-11
2.11. CADD Roadway and Structure Project Deliverables Policy	12
2.12. Printing	12
3. General Detailing Information	13
3.1. Text	13-14
3.2. Capitalization.....	14
3.3. Abbreviations	14
3.4. Titles	15-16
3.5. Borders.....	16
3.6. Dimensioning	17-20
3.7. Patterning.....	21
3.8. Drawing Scales	21-22
4. TSL and Final Plan Preparation	23
4.1. File Creation / Naming Convention	23
4.2. Roadway Data.....	23
4.3. Bridge Manual Checklists.....	23
4.4. Standards Checker	23
4.5. Final Plan Sheet Sequence.....	23-24
4.6. Guidelines	24
4.6.1. General.....	24
4.6.2. Type, Size and Location / General Plan and Elevation	24-25
4.6.3. Stage Construction Details	25-27
4.6.4. Top of Slab Elevations.....	28
4.6.5. Superstructure	28-29
4.6.6. Diaphragm Details (Integral Abutment)	29
4.6.7. Diaphragm Details (Semi-integral Abutment)	29
4.6.8. Bridge Approach Slab Details.....	29
4.6.9. Framing Plan (steel, PPC I-beam or bulb T-beam)	29
4.6.10. Structural Steel Details	29-30
4.6.11. Abutments and Piers	30
4.6.12. Pile Base Sheets	30
4.6.13. Soil Boring Logs	30
5. Addendums	31
6. Construction Changes.....	32
7. Internet Information	33
7.1. Web Page	33
7.2. Subscription Service	33
8. District and Central Office CADD Manager Contact Information.....	34

1 Introduction

The reference guide herein contains basic MicroStation and structure detailing information that shall be used in the preparation of structure plans for the Illinois Department of Transportation. It is intended to be used in conjunction with the IDOT [CADD Roadway and Structure Project Deliverables Policy](#) and the Bureau of Bridges and Structures Manuals.

For current versions of IDOT CADD software and additional information, refer to the IDOT CADD Support web site at <http://www.dot.il.gov/cadd.html>.

2 MicroStation Information

2.1 Configuration

Engineering Systems at IDOT has created a CADD environment which contains a basic configuration and necessary resource files for the preparation of roadway and structure plans. This environment is available at <http://www.dot.il.gov/cadd.html> as a single download entitled "IDOTCAD_v2011.exe". To use the IDOT CADD environment, refer to the "ReadMeNow.txt" file contained within the executable file. The Bureau of Bridges and Structures (BBS) cell libraries, seed files and color table (downloaded from the BBS Web Site) should be placed in the appropriate directory of the environment.

All of the bridge files downloaded from the Bureau of Bridges and Structures CADD Support Web Site (<http://www.dot.il.gov/bridges/bscadd2.html>) should take precedence over any files that exist in "IDOTCAD_v2011.exe" with the exception of three. These three files, "units.def", "scales.def", and "IDOTLevel2011.dgnlib", were created and are maintained by Engineering Systems. They are also included for download on the BBS Web Site in the event that the Engineering System's environment is not chosen to be employed.

When beginning any project, verify that the latest configuration files, resource files, cell libraries, and dgnlib's are installed. This can be accomplished via a comparison of installed files to those currently available from the Bridges and Structures CADD Support Web Page (i.e. through date, file size, etc.). Another way to verify currency is to be an active participant in the Bureau of Bridges and Structures Subscription Service. Subscribers are notified through e-mail whenever changes have been made to the contents of the BBS Web Site. Refer to [Section 7.2](#) for information on where to sign up for the Subscription Service.

2.2 Resource Files

Resource files necessary for the preparation of structure plans are as follows:

- Bridge.tbl: The Bureau of Bridges and Structures color table.
- fontlib.rsc: IDOT's custom font library for roadway and structure projects.
- Scales.def: Definition file used for setting the annotation scale.
- Units.def: Units definition file for selecting the proper working units.
- V8BridgeLineStyle.rsc: A revised line style resource file specifically for MicroStation v8 and subsequent versions. [Figure 2.2-1](#) contains a listing of line style names as well as how they appear in MicroStation.

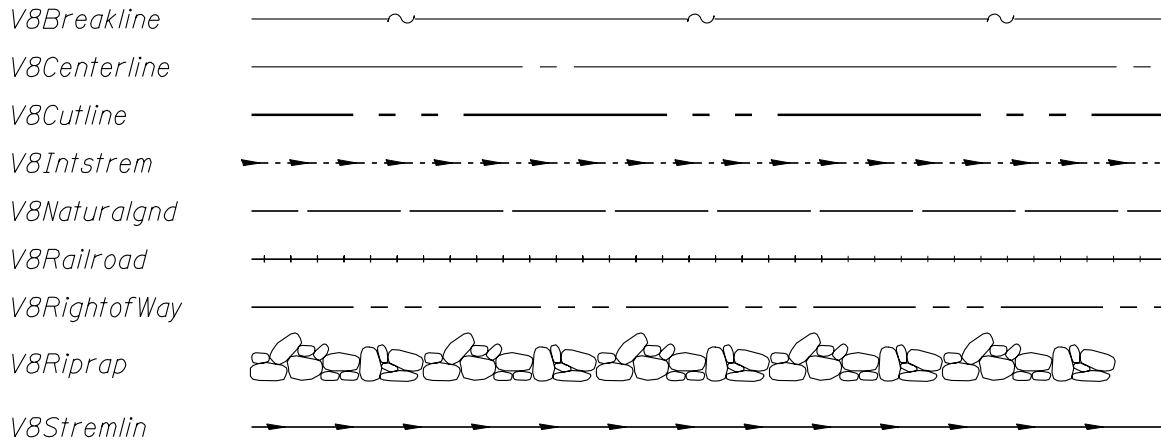


Figure 2.2-1. MicroStation v8i Line Style Names and Appearances

2.3 Dgnlib Files

Dgnlib's are design library files with predefined settings. When an element is placed in a design file, MicroStation "looks" to the dgnlib for that element's predefined properties or settings. Once placed, they become part of the active design file. If changes are made to the dgnlib, those changes are not automatically updated in the design file. However, all or part of the settings can be updated from a revised dgnlib by executing the key-in command "dgnlib update (all, dimstyles, levels, etc.)". The necessary dgnlib's are:

- BridgeStyles.dgnlib - contains the text and dimension styles used in the preparation of structure plans.
- IDOTLevel2011.dgnlib - contains all of the levels with assigned symbology settings for the different disciplines within IDOT.

2.4 Levels / Symbology

Levels are set up in the file "IDOTLevel2011.dgnlib" for each department discipline (bridge, roadway, mapping, aerial surveys, etc.) within IDOT. All symbologies are preset within this design library (dgnlib file). Attributes include name, color number, line style and weight for each level. Before placing elements into a design file, first select the desired level. After selection, all of the associated symbology will be automatically set. There are instances where overriding these attributes is allowed. For structures, it is allowed on the levels named "Bridge_Pattern", "Bridge_Miscellaneous" and "Soils_Boring Logs".

Filters have been set up to make it easier to locate a particular discipline's group of levels. The filter tool, located on the Attributes Toolbar, allows users to define the group of levels viewed within the Level Manager or Level Display dialogs.

For structures, there are four major groups of levels. [Figure 2.4-1](#) shows a table containing all of the structure levels. These basic groups are as follows:

- Group 1: Design levels - specifically for the creation of structure design plans.

- Group 2: Planning levels - levels for the creation of the plan and elevation views of the Type, Size and Location (TSL) as well as the plan and elevation views of the General Plan and Elevation (GP&E). The other details on a TSL can make use of the Bridge_TSandL or the Bridge_Design levels depending on the desired appearance.
- Group 3: Border levels – specifically for borders.
- Group 4: Common levels - remaining levels are common to both planning and design.

For the TSL and GP&E, it is acceptable to utilize the roadway levels for elements such as topography and existing elements that are taken from the roadway design (either copied or referenced).

Level Name	Use
Group 1 : Design Levels	
Bridge_Addendum	Level used for addendums
Bridge_Construction Change	Level used for construction changes
Bridge_Design Concrete Hidden	Hidden concrete object line for design plans
Bridge_Design Concrete Object	Concrete object line for design plans
Bridge_Design Existing	Existing object line for design plans
Bridge_Design Reinforcement	Reinforcement object line for design plans
Bridge_Design Reinforcement Bending	Reinforcement bar bending diagram object line for design plans
Bridge_Design Reinforcement Existing	Existing reinforcement object line for design plans
Bridge_Design Reinforcement Hidden	Hidden reinforcement object line for design plans
Bridge_Design Steel Hidden	Hidden steel object line for design plans
Bridge_Design Steel Object	Steel object line for design plans
Soils_Boring Logs	Soil boring logs (symbology may vary)
Group 2: Planning Levels	
Bridge_TSandL Concrete Hidden	Hidden concrete object line for GP & E and TS & L
Bridge_TSandL Concrete Object	Concrete object line for GP & E and TS & L
Bridge_TSandL Existing	Existing object line for GP & E and TS & L
Bridge_TSandL Intermittent Stream	Intermittent stream object line for GP & E and TS & L
Bridge_TSandL Natural Ground	Natural ground object line for GP & E and TS & L
Bridge_TSandL Railroad	Railroad track line for GP & E and TS & L location sketch
Bridge_TSandL Reinforcement	Reinforcement object line for GP & E and TS & L
Bridge_TSandL Reinforcement Existing	Existing reinforcement object line for GP & E and TS & L
Bridge_TSandL Reinforcement Hidden	Hidden reinforcement object line for GP & E and TS & L
Bridge_TSandL Right of Way	Right of Way line for GP & E and TS & L
Bridge_TSandL Steel Hidden	Hidden steel object line for GP & E and TS & L
Bridge_TSandL Steel Object	Steel object line for GP & E and TS & L
Bridge_TSandL Streamline	Stream object line for GP & E and TS & L
Group 3: Border Levels	
Bridge_Sheet Border	Border level
Bridge_Sheet Design Print	Design level for shape that can be used with batch plot
Bridge_Sheet TsandL Print	Planning level for shape that can be used with batch plot
Group 4: Common Levels	
Bridge_Breakline	Breakline (shift position if unable to see pattern)
Bridge_Centerline	Centerline (shift position if unable to see pattern)
Bridge_Construction Line	Level used for construction elements
Bridge_Cut or Match Line	Cut or match line (shift position if unable to see pattern)
Bridge_Dimensions and Text	General text and dimensions
Bridge_Markups	Level for revision notation for designers
Bridge_Miscellaneous	Level where symbology may vary
Bridge_Pattern	Patterning
Bridge_Riprap	Riprap
Bridge_Table Border	Heavy line for use with tables
Bridge_Table Lines	Thin lne for use with tables
Bridge_Title	Title level

Figure 2.4-1. Structure Levels

2.5 Text Styles

Text styles are a feature in MicroStation which greatly simplifies and standardizes the placement of text. When placing text, selecting a text style automatically adjusts the text settings. When used, it is not necessary to manually change font, text height, text width, line spacing or other properties independently.

Five text styles listed in Fig. 2.5-1 were created for use in the creation of structure plans. These text styles were set up using the data presented in Fig. 2.5-2. They exist in the file named "BridgeStyles.dgnlib".

Text styles	Use
Br1:001scale100	Subscript and superscript
Br1:001scale140	Callouts, dimensions and notes
Br1:001scale200	Titles
Br1:001scale_boring	Text in soil boring logs (In-house)
Br1:001scale_TOS_Elev	Top of slab elevation table text

Figure 2.5-1. Text Styles for ANSI D-size Structure Plans

Text Style Settings					
	font	height (in inches)	width (in inches)	line spacing (in inches)	underline
General text	30	0.14	0.14	0.10	no
Subscripts	30	0.10	0.10	NA	no
Top of Slab Elevations	31	0.14	0.14	0.10	no
Text in soil boring logs	107	0.09	0.09	NA	no
Titles	30	0.20	0.20	0.20	yes*

Figure 2.5-2. Text Style Settings for ANSI D-size Structure Plans

In order to use text styles, one must understand that they have been set up relative to the ANSI D-sized border which is literally 22" x 34". Unlike the roadway borders, the structure borders are not scaled twelve times in the bridge cell library. This is so that either the architectural or engineering scales could easily be chosen without requiring the annotation scale to be different than the scale factor used in placing the border.

Section 3.8 briefly discusses four methods of drawing, the first two not requiring the use of the annotation scale feature in MicroStation. If the latter two are used, the annotation scale feature must be used.

The use of Annotation Scale has been simplified in MicroStation v8i. The "Drawing Scale" dialog has been added and may be accessed through the pull-down, "Settings" / "Drawing Scale". From within the dialog, the "Annotation Scale" toggle must be turned on. The only other step needed is the selection of the desired scale. (See Figure 2.5-3). Note that the annotation scale settings apply only to the current model of a particular dgn. These settings may also be changed in the Model Properties dialog as they were in MicroStation v8. Additional settings are available there.

One item that should be mentioned here is that the text settings of the text styles generally should not be overridden. Two exceptions are with the justification and occasionally the underline. Changing other settings defeats the purpose of having text styles.

Another item that should be mentioned here is if the dgnlib update command is run against a file using text or dimension styles, the overrides may inadvertently be switched to the default settings of the associated text styles or dimension styles. Because of this, caution should be exercised if executing this command.

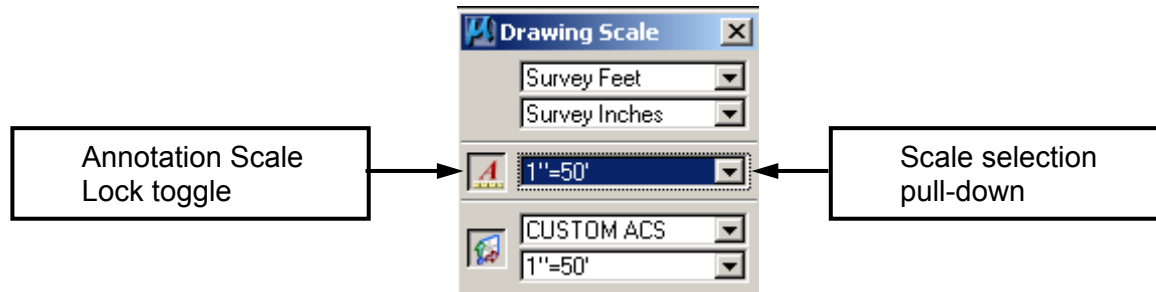


Fig. 2.5-3. Drawing Scale Dialog

2.6 Dimension Styles

Dimension styles are a feature in MicroStation which simplifies placement of dimensions and promotes uniformity in dimensioning. Similar to text styles, the dimension settings are pre-defined inside of "BridgeStyles.dgnlib". They also may require that the annotation scale be set and turned on in order for them to work properly.

Refer to [Section 3.6](#) for further discussion of dimensioning and the use of dimension styles.

2.7 Working Units

The working units are set in survey feet for master units and survey inches for sub-units in the IDOT seed files. The working units are defined in all IDOT seed files and are extremely important in long distance design file measurements. Along with the working units, the importance of the global origin setting of the design file affects the accuracy of the design. The Department sets the global origin to x=0, y=0, and z=0 in all of the IDOT seed files.

2.8 Models

A major addition to MicroStation v8 was in the creation of models. The model concept allows for multiple drawings (models) within a single design file. The Bureau of Bridges and Structures is utilizing the model concept by creating each sheet of a set of design plans in its own design model. Use of the model concept in the preparation of structure plans is not mandatory. It is acceptable to have individual files for each sheet. A sample project has been placed on the Bureau of Bridges and Structures Web Site to illustrate both methods. (These may not depict the most current policy). They are available at: <http://www.dot.il.gov/bridges/bscadd2.html>

MicroStation v8i provides additional model types. There are design models, drawing models, and sheet models. Design and sheet models have the ability to be three-dimensional, while the drawing models are only allowed to be two-dimensional. At this time, we only use and accept two-dimensional models for all plan sheets; however, three-dimensional files or models may be used to generate the two-dimensional plan sheets.

2.9 Seed Files

Three seed files are available for the preparation of structure plans. They are named “ebridge_models.dgn”, “ebridge_individual.dgn”, and “ebridge_in-house.dgn”.

The “ebridge_models.dgn” file contains design and planning models in which ANSI D-sized borders have been placed. Additional models intended for sheets and full scale details may be added or removed as required. The ebridge_models.dgn seed file should be chosen if a single design file is to be employed for an entire job. Figure 2.9-1 provides a screen capture showing contents of the “ebridge_models.dgn” seed file.

Type	2D/3D	Name	Description	Cell Type
<input checked="" type="checkbox"/>	<input type="checkbox"/>	0000000-00000-001	General Plan & Elevation	Graphic
<input type="checkbox"/>	<input type="checkbox"/>	0000000-00000-002	Enter description	Graphic
<input type="checkbox"/>	<input type="checkbox"/>	0000000-00000-003	Enter description	Graphic
<input type="checkbox"/>	<input type="checkbox"/>	0000000-00000-004	Enter description	Graphic
<input type="checkbox"/>	<input type="checkbox"/>	0000000-00000-005	Enter description	Graphic
<input type="checkbox"/>	<input type="checkbox"/>	0000000-00000-006	Enter description	Graphic
<input type="checkbox"/>	<input type="checkbox"/>	0000000-00000-007	Enter description	Graphic
<input type="checkbox"/>	<input type="checkbox"/>	0000000-00000-008	Enter description	Graphic
<input type="checkbox"/>	<input type="checkbox"/>	0000000-00000-009	Enter description	Graphic
<input type="checkbox"/>	<input type="checkbox"/>	0000000-00000-010	Enter description	Graphic
<input type="checkbox"/>	<input type="checkbox"/>	0000000-00000-011	Enter description	Graphic
<input type="checkbox"/>	<input type="checkbox"/>	0000000-00000-012	Enter description	Graphic
<input type="checkbox"/>	<input type="checkbox"/>	0000000-00000-013	Enter description	Graphic
<input type="checkbox"/>	<input type="checkbox"/>	0000000-00000-014	Enter description	Graphic
<input type="checkbox"/>	<input type="checkbox"/>	0000000-00000-015	Enter description	Graphic
<input type="checkbox"/>	<input type="checkbox"/>	0000000-00000-016	Enter description	Graphic
<input type="checkbox"/>	<input type="checkbox"/>	0000000-00000-017	Enter description	Graphic
<input type="checkbox"/>	<input type="checkbox"/>	0000000-00000-018	Enter description	Graphic
<input type="checkbox"/>	<input type="checkbox"/>	0000000-00000-019	Enter description	Graphic
<input type="checkbox"/>	<input type="checkbox"/>	0000000-00000-020	Enter description	Graphic
<input type="checkbox"/>	<input type="checkbox"/>	0000000-00000-TSL-001	TS & L (1 of)	Graphic

Figure 2.9-1. Contents of Seed File “ebridge_models.dgn”

The “ebridge_individual.dgn” file contains a single design model with a design border inserted. This seed file should be chosen if an individual design file is utilized for each sheet in a job. Figure 2.9-2 provides a screen capture showing the contents of the “ebridge_individual.dgn” seed file.

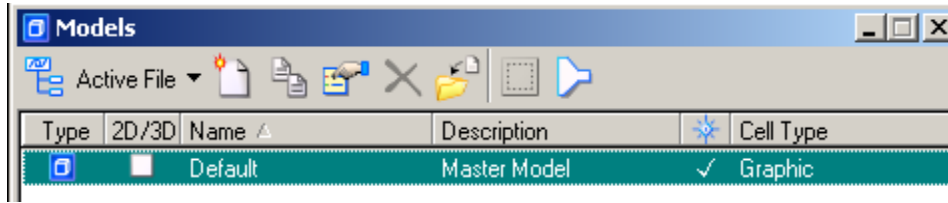


Figure 2.9-2. Contents of Seed File “ebridge_individual.dgn”

The “ebridge_in-house.dgn” file is solely for jobs to be completed internally by IDOT. It is similar to the “ebridge_models.dgn” seed file, but contains our in-house borders which slightly differ from those to be used by consultants.

For all three seed files, the borders are placed with the lower left hand corner of the inner border (working area) at $xy=0,0$.

The file naming requirements for design files and models are discussed in the [CADD Roadway and Structure Project Deliverables Policy](#). Model names and descriptions are easily changed by slowly double-clicking on a model in the models dialog or else they may be changed in the “Edit Model Properties” dialog.

For more information concerning the borders used in these seed files, see [Section 3.5](#).

2.10 Cell Libraries

Although the cell libraries appear as in previous versions of MicroStation, they are quite different. Cell libraries are now drawings that utilize the design model concept, but maintain the previous file extension of “cel”. Each “cell” in a cell library is a design model. However, the cell libraries can be used in a similar manner to previous versions of MicroStation. They can also be imported into a design file using the models dialog, or opened and manipulated just as any other design file.

The Bureau of Bridges and Structures has several cell libraries available to aid in the preparation of structure plans. Most of the libraries contain “base sheets” which are either complete, or require additions or modification in order to be included with a set of design plans. It is important to note that if a base sheet’s original content is changed, the base sheet name and date must be removed. This signals to the reviewers that modifications were made to the base sheet. If information is added to a base sheet (such as filling in dimension values), then the base sheet name and date should remain. In addition to this, when base sheets contain details that do not apply to a project (such as the pile base sheets), the details that are not applicable are not to be crossed out.

The Bureau of Bridges and Structures periodically updates the base sheets and revised copies are placed on the Bureau’s Web Site. E-mails are sent to subscribers of the IDOT Bureau of Bridges and Structures Subscription Service whenever these updates are posted on the Internet. The other available cell libraries contain individual details or elements that can be used for structure plan preparation. E-mail notifications are also sent out when these are updated. (See [Section 7.2](#)).

Adobe Acrobat “pdf” files have also been created for each of the cell libraries and are available on the BBS Web Site. Each pdf contains a table of contents and individual images of the cells or base sheet cells. The table of contents for each library contains links to each of the cell images.

[Figure 2.10-1](#) presents a list of the structure libraries and their contents.

Details, symbols and notes	
bridge.cel	Patterns, symbols and full size bridge objects
details.cel	Bridge design details (not included with base sheets)
general_notes.cel	General notes for placement on GP & E or general data sheet
pay_items.cel	Pay items for Total Bill of Material on GP & E or general data sheet
planning.cel	Planning details for TS & L and GP & E
Bridge base sheets	
PPC_deckbeam.cel	PPC Deck beam superstructure
prestressed.cel	Superstructure (PPC I-beams and Bulb T-beams)
substructure.cel	Substructure (abutments, piers and piles)
superstructure.cel	Superstructure (deck, bearings, railings, scuppers, diaphragms)
Culvert base sheets	
single_box_culvert.cel	single box culvert with horizontal cantilever, T type or L type wingwalls
double_box_culvert.cel	double box culvert with horizontal cantilever, T type or L type wingwalls
Sign structure base sheets	
alum_butterfly_sign.cel	Aluminum butterfly sign structures
alum_cantilever_sign.cel	Aluminum cantilever sign structures
alum_simple_span_sign.cel	Aluminum simple span sign structures
breakaway_tubular_steel_sign.cel	Breakaway tubular steel signposts
breakaway_wf_steel_sign.cel	Breakaway wide flange steel signposts
bridge_mounted_sign.cel	Bridge mounted sign structures
monotube_sign.cel	Monotube sign structures
steel_cantilever_sign.cel	Steel cantilever sign structures
steel_simple_span_sign.cel	Steel simple span sign structures
steel_trichord_sign.cel	Steel trichord sign structures

Figure 2.10-1. Structure Libraries and Contents

2.11 CADD Roadway and Structure Project Deliverables Policy

A link for the CADD Roadway and Structure Project Deliverables Policy exists at <http://www.dot.il.gov/bridges/bscadd2.html> . It addresses project file requirements, data transfer, coordination, design file management, file naming conventions as well as various FAQ's. Both the CADD Structures Drafting Reference Guide as well as the CADD Roadway Drafting Reference Guide are referenced by it.

2.12 Printing

The borders provided in the cell library "bridge.cel" (as well as the seed files) are designed to facilitate the use of batch printing. There is a single shape on the level "Bridge_Sheet Design Print" that is used for printing to both ANSI B-size sheets as well as ANSI D-size sheets. The ANSI D-size sheets are to be printed onto 34" wide paper. It is important to note that the outer shape of roadway and structure borders are intended to be the edge of the paper or image. It is not to be visible in the final prints or images. This is true for both the ANSI B-size as well as the ANSI D-size prints or images.

Figure 2.12-1 is a table showing the line thicknesses used on full size (ANSI D) prints. The line thicknesses for quarter-size (ANSI B) plans should be set to one-half of these values.

In a similar manner, Figure 2.12-2 is a table showing the line strokes used on full size (ANSI D) prints for defining MicroStation's built-in line codes. The line strokes for quarter-size (ANSI B) plans should be set to one-half of these values.

Weight WT =	Thickness (in)	Thickness (mm)	Pen Size
0	0.010	0.250	000
1	0.014	0.350	0
2	0.020	0.500	1
3	0.024	0.600	2
4	0.031	0.800	3
5	0.047	1.200	4

Figure 2.12-1. Line Thicknesses for ANSI D-size Prints

Line Code LC =	Line (in)	Space (in)	Line (in)	Space (in)	Line (in)	Space (in)
1	0.015	0.0394				
2	0.0788	0.0788				
3	0.1574	0.0788				
4	0.1574	0.0788	0.0236	0.0788		
5	0.0552	0.0552				
6	0.1574	0.0552	0.0394	0.0552	0.0394	0.0552
7	0.1574	0.0552	0.0552	0.0552		

Figure 2.12-2. Line strokes for ANSI D-size Prints

3 General Detailing Information

3.1 Text

The text styles discussed in the MicroStation Configuration Information section ([Section 2.5](#)) shall be used in the preparation of structure plans in order to provide uniformity in appearance.

The following is information regarding how text should be placed in structure plans:

- Words that are abbreviated should not be capitalized or put in parentheses. Examples are “typ.,” “min.” and “max.”
- When using asterisks for a reference note, place the asterisk as a separate text entity to the left of the note as follows:
 - * Tightly fasten the #8 bars together
With No. 9 wire ties.
- When placing a note under a title of a section which applies to that section, do not use “Note:”. Only use “Note:” for a block of notes that are grouped or listed together in one location on a sheet.
- The words “wingwall”, “streambed” and “headwall” have been shown both as single words (wingwall) and as separate words (wing wall). They should always be shown as single words.
- The plus-or-minus symbol (“±”) shall be placed before approximate dimensions unless showing a specific tolerance. A specific tolerance should be shown in parentheses following the dimension.
- Avoid use of the note “Work this sheet with sheet...”. Use of a note such as this can become cumbersome and usually provides little benefit.
- Do not call out the route number within a job unless it is the centerline of a divided highway. Call out the centerline of roadway (and PG if applicable).
- Notes that are a part of any of the BBS base sheets should generally remain on the base sheet. As an example, the note “A distance of half the length of the wingwall but not less than six feet of the barrel shall be poured monolithically with the wingwalls” is occasionally moved or reworded on the GP&E. This note should not be moved or reworded unless a unique situation requires it.
- All notes should be left justified. An exception is when a multi-line callout is placed between arrows of a dimension. In this case, it can either be left or center justified. If it is left justified, try to make each line of text approximately the same length.
- The Bill of Material for individual elements, such as superstructure, abutment, pier, etc., should contain only the items that are listed in BBS base sheets. Showing all of the pay items for each of the structure elements on these sheets is unnecessary. All of the pay items are shown on the total bill of material.
- For appearance, the reinforcement bars should be listed in the bill of material with a blank line between the bar groupings, e.g. show a blank line between b bars and d bars.
- When referencing sheets, do not write “See sheet #3 of #15”, instead use “See sheet 3 of 15”.
- Slopes shall be listed as “1:X (V:H)” [e.g. “1:2 (V:H)”] as opposed to “2:1” which was shown in the past and implied “horizontal:vertical”.
- Cross slopes shall be denoted in inches per foot (“/ft) unless there is a super-elevation.

- Generally, span numbers do not need to be called out. An exception to this could be a large structure with many spans.
- When calling out the centerline of a pier, do not call it out as centerline bearing pier __. There are instances when the centerline bearing and centerline pier are not the same. It is preferable to either use two separate labels or to write “Centerline bearing and centerline pier”.
- Callouts for reinforcement bar spacing, steel plates, and bearing plates may be shown in inches. However, plan view dimensions for reinforcement bars and bearing plate details shall be shown in feet and inches.
- Concrete dimensions shall be shown in feet and inches. If a concrete dimension is less than 1'-0”, it shall be shown in inches.

3.2 Capitalization

As a general rule, capitalize the first letter of the first word of a note or sentence as well as proper names. There are two basic exceptions. One is contractual parties such as Engineer and Contractor. The other basic exception is pay items. The first letter of each word of the pay item should be capitalized except for words such as “of”, “and”, “for” or “in”.

3.3 Abbreviations

Figure 3.3-1 contains a basic list of acceptable abbreviations that may be used when necessary. Generally try to spell words out unless there is a problem with space. Periods do not need to be placed within abbreviations of proper names such as AASHTO.

<i>abut.</i>	<i>abutment</i>	<i>min.</i>	<i>minimum</i>
<i>B.F.</i>	<i>back face</i>	<i>no.</i>	<i>number</i>
B	<i>baseline</i>	<i>O.F.</i>	<i>outside face</i>
<i>brg.</i>	<i>bearing</i>	<i>PJF</i>	<i>prefomed joint filler</i>
C	<i>centerline</i>	<i>PJS</i>	<i>prefomed joint sealer</i>
<i>cl.</i>	<i>clearance</i>	<i>PG</i>	<i>profile grade</i>
<i>conc.</i>	<i>concrete</i>	<i>prop.</i>	<i>proposed</i>
<i>const.</i>	<i>construction</i>	<i>rte.</i>	<i>route</i>
ϕ	<i>diameter</i>	<i>sect.</i>	<i>section</i>
<i>E.F.</i>	<i>each face</i>	<i>sta.</i>	<i>station</i>
<i>elev.</i>	<i>elevation</i>	<i>struct.</i>	<i>structure</i>
<i>exist.</i>	<i>existing</i>	<i>typ.</i>	<i>typical</i>
FL	<i>flowline</i>	<i>req'd.</i>	<i>required</i>
<i>F.F.</i>	<i>front face</i>	<i>spa.</i>	<i>spaces</i>
<i>I.F.</i>	<i>inside face</i>	<i>std.</i>	<i>standard</i>
<i>jt.</i>	<i>joint</i>	<i>spec.</i>	<i>specification</i>
<i>long.</i>	<i>longitudinal</i>		
<i>max.</i>	<i>maximum</i>		

Figure 3.3-1. Basic List of Acceptable Abbreviations

3.4 Titles

The guidelines listed below shall be followed when placing titles for sheets or for individual details:

- Both the planning TS & L sheet(s) and the design GP & E must show the sheet name, crossing, route, section, county, station and structure number. The title is to be placed as shown in Fig. 3.4-1 using the text style "Br1:001scale200".

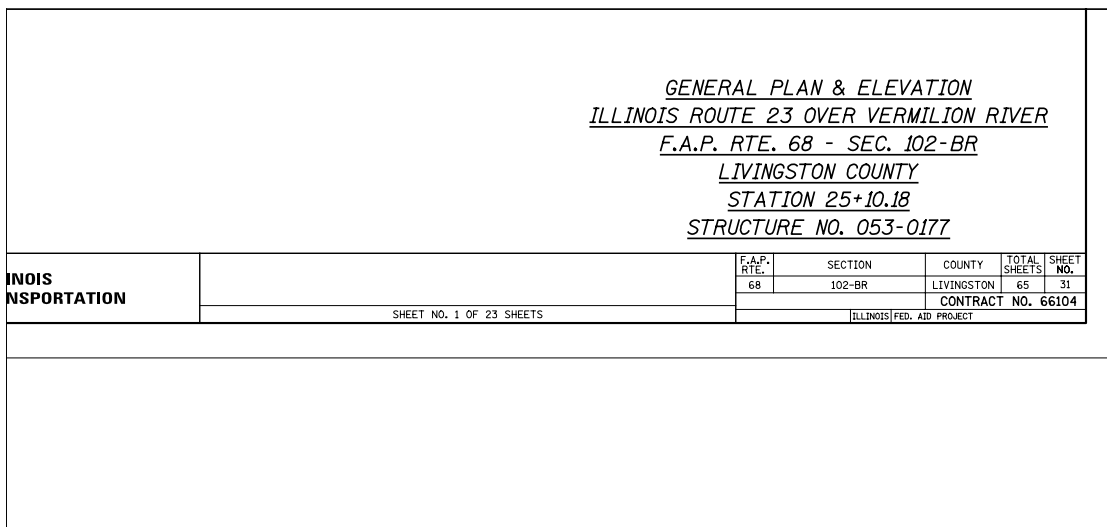


Figure 3.4-1. TS & L and GP & E Title Placement

- For all other sheets of the design plans, only the sheet name and structure number are shown within the title block. Data fields exist within the borders for this information. They are to appear as shown in Fig. 3.4-2 using the data fields.

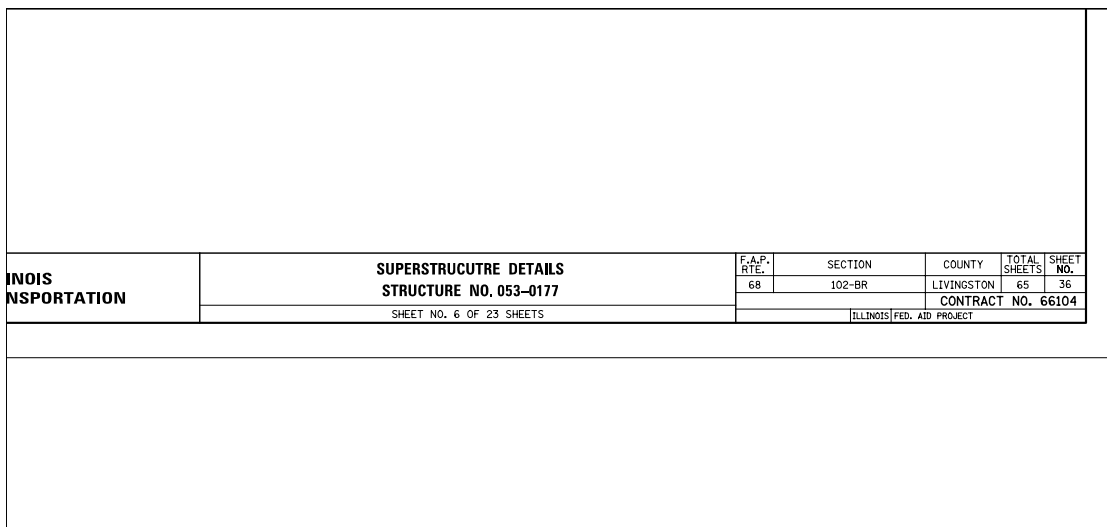


Figure 3.4-2. Title Placement for all other Sheets

- The titles for individual details within a set of plans are to be placed using the text style “Br1:001scale200”. By using this text style, the justification, spacing, text size and underlining will appear correctly.
- There has been a tendency at times to make detail titles somewhat lengthy or wordy. This should be avoided. If detail titles require further description, it should be done in standard text below the title.

3.5 Borders

The borders used for the preparation of structure plans have been changed to more closely match those used by the rest of the Department. Four structure borders were created: however, three of the four are solely to be used for in-house projects. The cell B00043 of the file “bridge.cel” contains the border that is to be used for consultant structure plans. This cell was placed in the model(s) of the seed files (“ebridge_models.dgn” and “ebridge_individual.dgn”).

The borders used for roadway plans are different than the borders for structure plans. One must not be substituted for the other. The greatest difference between the structure borders and the roadway borders lies primarily in the levels used. Other minor differences include changes in the signature/name block as well as the removal of the scale and the station to station data below the sheet title.

As stated in [Section 2.12](#), It is important to note that the outer shape (22” x 34”) of roadway and structure borders are intended to be the edge of the paper or image. This shape is not to be visible in the final prints or images. This is true for both the ANSI B-size as well as the ANSI D-size prints or images.

Consultant names and/or logos shall be included in the lower left block of structure borders as shown in [Figure 3.5-1](#). The “File name =” text may be removed if desired.

The new structure border(s) are to be used for projects started after July 1, 2010.

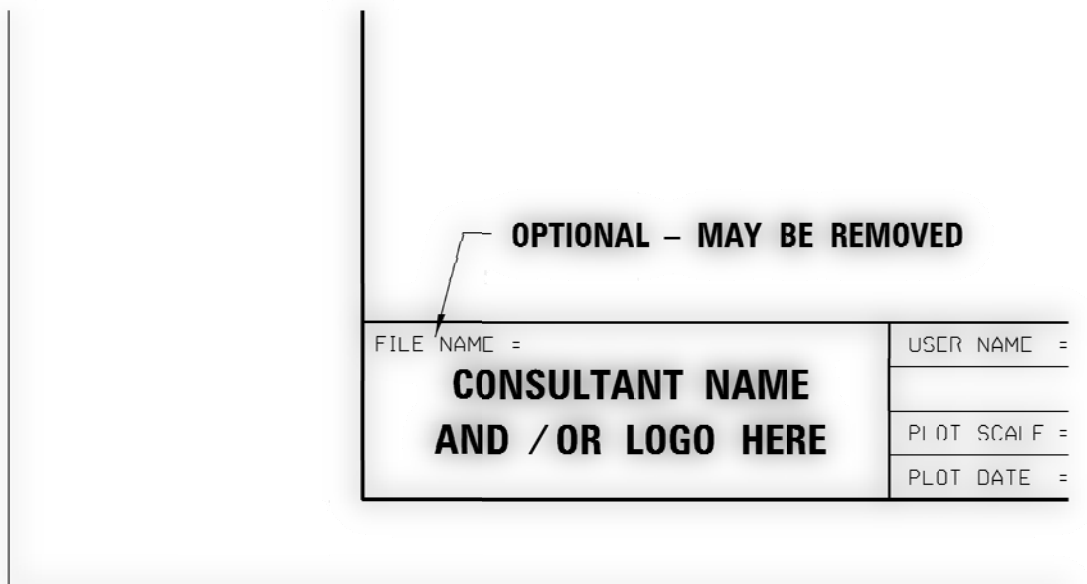


Figure 3.5-1. Consultant Name Placement for all Sheets

3.6 Dimensioning

The BBS currently places dimensions manually using line terminators; however, the dimension style "Bridge1:001" has been created and may be used instead of, or in addition to, manually placed dimensions. It is important to note that only basic settings have been pre-defined for this dimension style. It is likely some changes will be required to these settings for use in a project. However, some potential problems can be avoided by not executing the "dgnlib update" command for the dimensions after the dimension style has been modified. Once a dimension is placed in a design file, those properties then become a part of the design file.

Whether manually placing dimensions or employing the dimension style, the proper arrowhead B00021 from the cell library "bridge.cel" should be used.

Guidelines for the placement of dimensions or callouts are as follows:

- Dimension stack spacing should be $\frac{1}{2}$ ", although $\frac{3}{8}$ " is acceptable if there are space constraints. The extension lines should extend $\frac{1}{16}$ " beyond the dimension line. See [Figure 3.6-1 \(Detail "a"\)](#).
- Dimension lines should not be broken unless passing through another dimension or text. See [Figure 3.6-1 \(Detail "b"\)](#).
- Generally, do not break or mask object lines for dimension lines unless there is interference with an arrowhead or text. See [Figure 3.6-1 \(Detail "c"\)](#).
- If the active angle when placing text is between 90 degrees and 105 degrees, the text should be placed such that it can be read from the right of the sheet. If the angle is greater than 105 degrees, it should be placed such that it can be read from the left or bottom. See [Figure 3.6-2](#).
- It is acceptable to show reinforcement dimensions with double arrows or by pointing to the first and last bar. Consistency with a chosen style is important.
- If there is no skew on a structure, there is no need to dimension a 90 degree angle throughout the job. This angle should only be shown on the TSL and GP&E.
- Avoid causing callouts to pass through lines of dimensions. See [Figure 3.6-3](#).

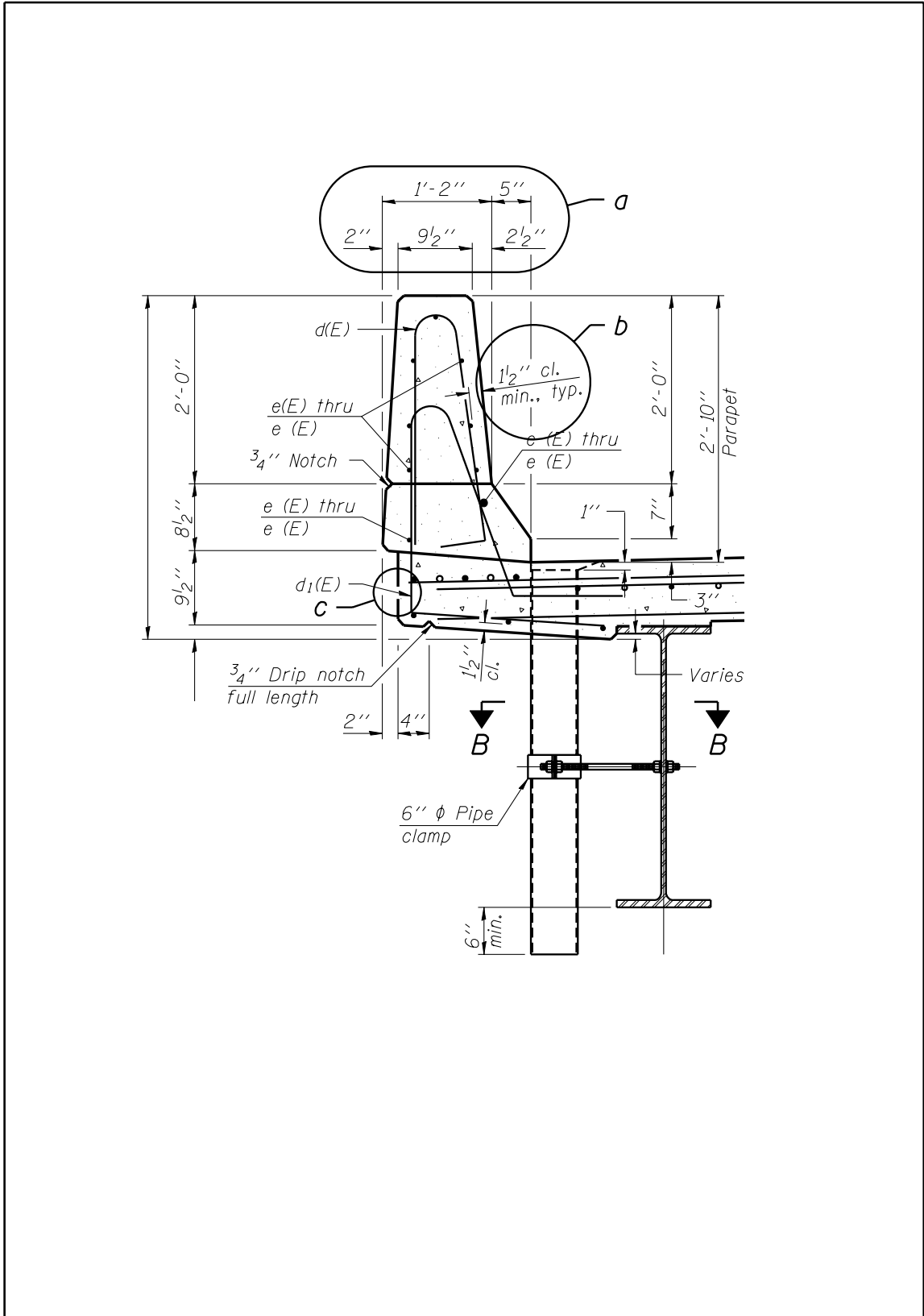


Figure 3.6-1. Dimension Placement and Callouts (Example #1)

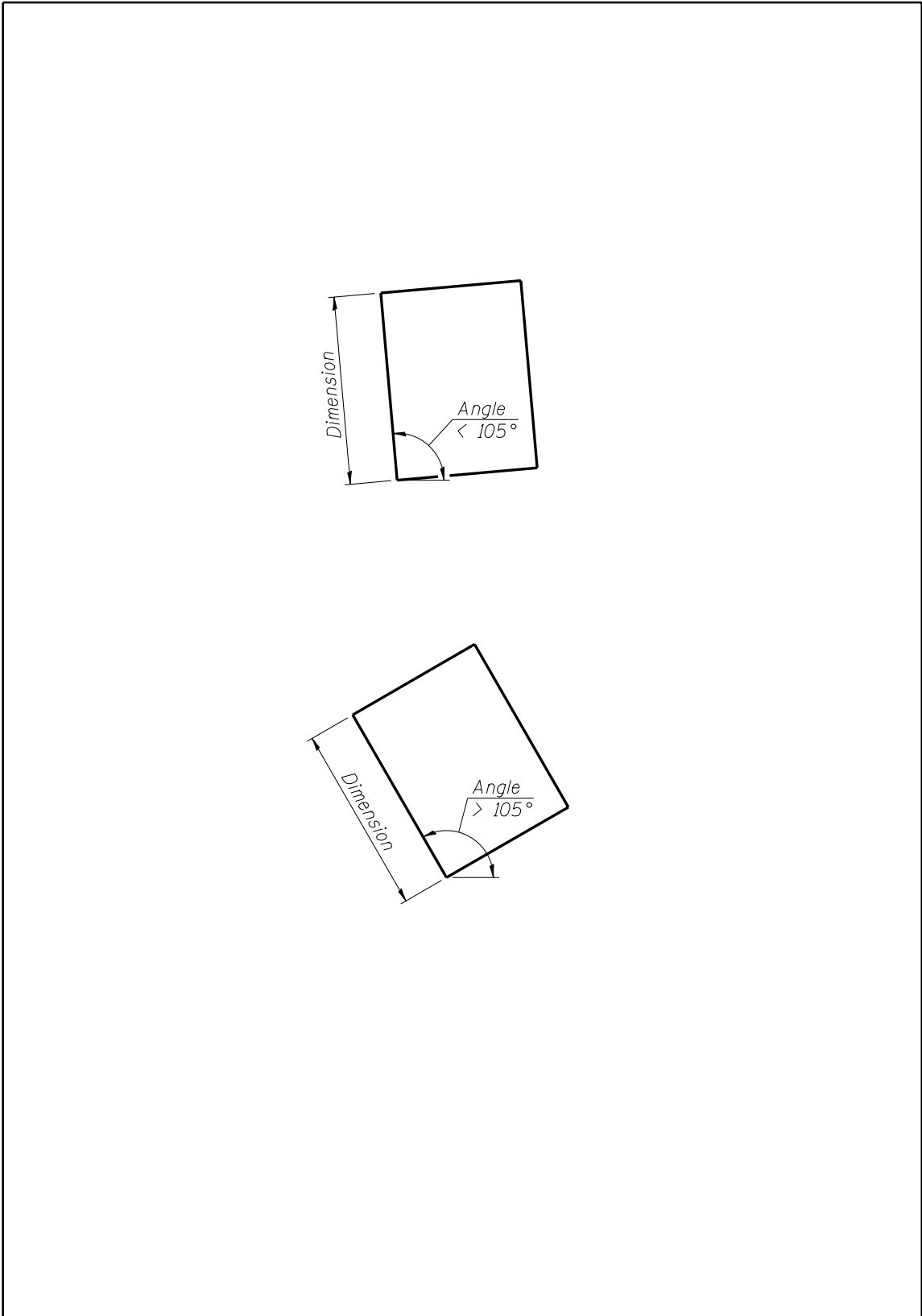


Figure 3.6-2. Dimension Placement and Callouts (Example #2)

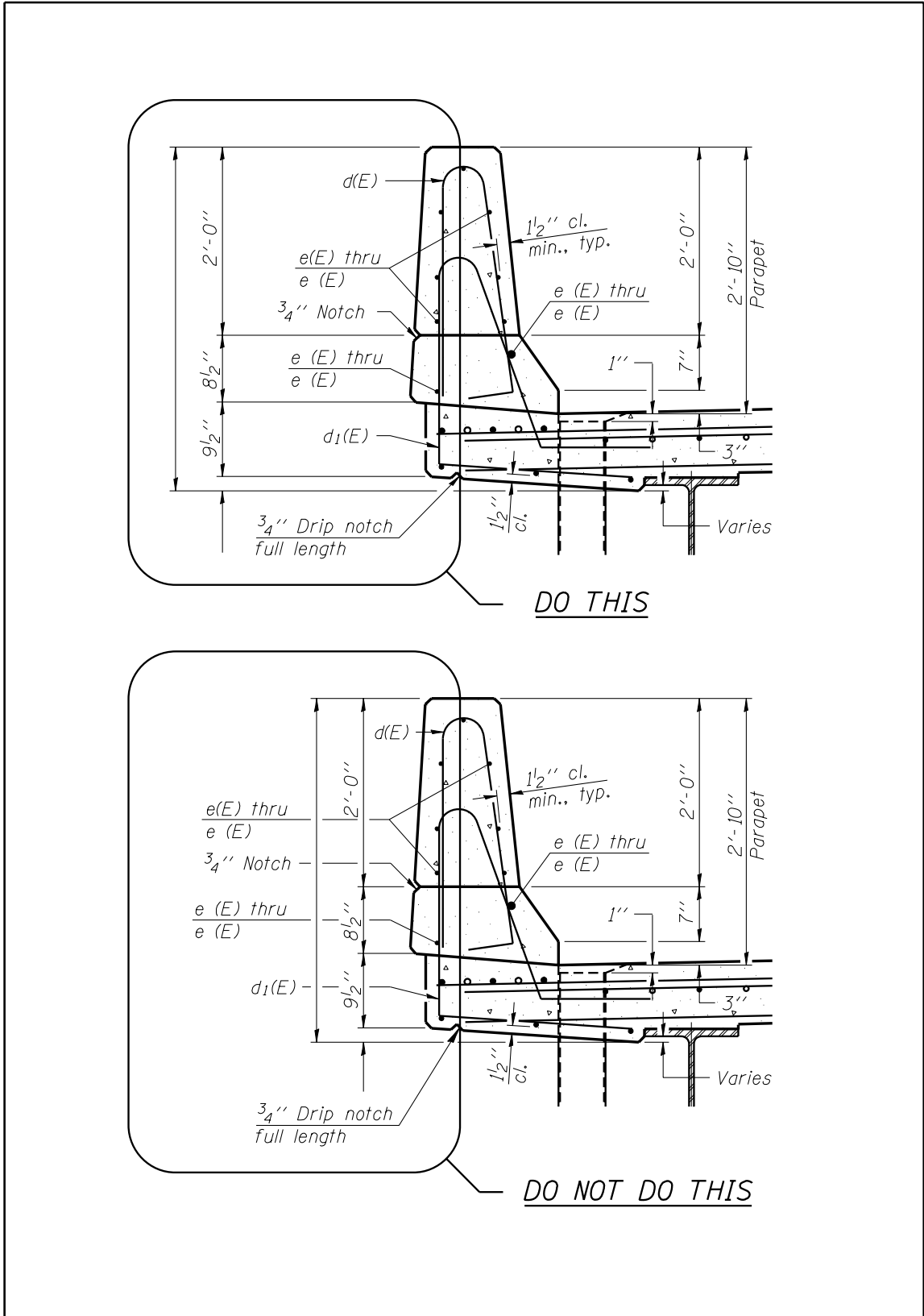


Figure 3.6-3. Dimension Placement and Callouts (Example #3)

3.7 Patterning

Several different patterns exist in “bridge.cel” for general use. They include both area patterns and linear patterns. The area patterns are generally used for section cuts. The linear patterns are not essential due to the creation of the BBS custom line styles. However it is still acceptable to use the linear patterns.

Suggested guidelines for the placement of patterns are as follows:

- Whenever a section is cut through any material, the surfaces touched by the cutting plane should be patterned using the proper pattern (stipple or hatching).
- End views should not be patterned as if they are sections.

3.8 Drawing Scales

Although drawings do not have to be drawn “to scale”, many times it is beneficial to do so. If drawings are to scale, the scale used is not to be identified. If details are not drawn to scale, they should always be proportionate. [Figure 3.8-1](#) lists common architectural and engineering scales that may be used.

There are different methods of drawing plans to scale. Four of the methods that can be used are as follows:

- Draw full scale to the side, scaling it down by $1 / \text{scale factor}$. The newer base sheets have been drawn using this method such that they could be contained in individual cells of a cell library in a uniform manner. The annotation scale is not set in this method.
- Draw full scale in a separate design model or design file other than the border. From within the file (or model) containing the border, the full scale drawings are referenced in at $1 / \text{scale factor}$. Text and dimensions can be placed either in the design file (or model) with the border or in the design file (or model) with the full scale drawing. Employment of the annotation scale feature is necessary if the text and dimensions are placed in the design file (or model) containing the full scale drawing. See [Section 2.5](#) for information concerning the annotation scale.
- Draw full scale, inserting the border at the desired scale factor into the same design file (or model). Text and dimensions are required to be placed using the annotation scale feature. See [Section 2.5](#) for information concerning the annotation scale.
- Reference full scale drawing at 1:1 into file (or model) containing a border scaled up by the desired scale factor. Employment of the annotation scale feature is necessary whether the text and/or dimensions are placed in the file containing the border or else in the file that is referenced. See [Section 2.5](#) for information concerning the annotation scale.

There are advantages and disadvantages to each of the above methods. The Bureau of Bridges and Structures typically uses the first or the second method. The sample drawings on the Bridges and Structures CADD Support Web Page provide examples of the first two methods.

Architectural Scales	
	Scale
1:192	1/16" = 1'-0"
1:128	3/32" = 1'-0"
1:96	1/8" = 1'-0"
1:64	3/16" = 1'-0"
1:48	1/4" = 1'-0"
1:32	3/8" = 1'-0"
1:24	1/2" = 1'-0"
1:16	3/4" = 1'-0"
1:12	1" = 1'-0"
1:8	1 1/2" = 1'-0"
1:4	3" = 1'-0"

Engineering Scales	
	Scale
1:2400	1" = 200'
1:1200	1" = 100'
1:720	1" = 60'
1:600	1" = 50'
1:480	1" = 40'
1:360	1" = 30'
1:240	1" = 20'
1:120	1" = 10'
1:60	1" = 5'

Figure 3.8-1. Common Architectural and Engineering Scales

4 TSL and Final Plan Preparation

4.1 File Creation / Naming Convention

As stated in [Section 2.8](#) of this Guide, individual design files or design files containing models may be used when creating TSL's or design plans. In either case, the seed files from the BBS Web Site (<http://www.dot.il.gov/bridges/bscadd2.html>) shall be utilized.

The file naming conventions for TSL's and design plans are covered in the [CADD Roadway and Structure Project Deliverable Policy](#).

4.2 Roadway Data

When creating a TSL, GP&E or other details where roadway information is used, it is acceptable to either incorporate the roadway information (such as the topography) into a project's design file/model, or reference this data from the roadway files into the design file/model. In either case, it is acceptable to use the roadway levels and line styles for this information. Changing these elements to the structure levels is not required.

4.3 Bridge Manual Checklists

The Bridge Manual contains checklists for the preparation of TSL's and final design plans.

For TSL's, the checklists begin in Section 2.3.13.1. There are example TSL's for a variety of projects available at: <http://www.dot.il.gov/bridges/examples.html>.

For final design plans, the checklist is located in Section 3.1.13.

4.4 Standards Checker

The Standards Checker files exist in the CADD environment discussed in [Section 2.1](#). Instructions on its use from within MicroStation are in the directory containing the dgnlib files. It is titled [MicroStation Standards Checker.doc](#). It is important to note that the instructions work for projects in which individual design files are provided for each sheet of the plans. For projects where multiple design models are contained within a single design file, the Standards Checker is required to be run as a batch process under Utilities/Batch Process.

4.5 Final Plan Sheet Sequence

Design plans should be sequenced as follows:

- General Plan and Elevation (GP&E)
- General Data (except for simple structures)
- Footing Layout (if required)
- Stage Construction Details (if required)
- Temporary Barrier or Temporary Railing Details (if required)
- Top of Slab Elevations
- Top of Approach Slab Elevations
- Superstructure (Plan and Cross Section)
- Superstructure Details
- Diaphragm Details (for bridges with integral or semi-integral abutments)
- Bridge Approach Slab Details

- Bridge Railing Details
- Expansion Joint Details
- Drainage Scuppers
- Girder and Framing Details (Steel or Concrete)
- Bearing Details
- Abutment Details
- Pier Details
- Foundation Details (includes piles)
- Bar Splicer Assembly Details
- Cantilever Forming Brackets
- Soil Boring Logs

4.6 Guidelines

Sections 4.6.1 through 4.6.13 contain a collection of guidelines that should be followed when working with any structure plans. Questions and problems that have been encountered over the years led to their creation. The information has been grouped together by plan sheet type.

4.6.1 General

The following guidelines apply to all applicable sheets of structure plans:

- Details in plan view (where orientation is important and unique to that view) must utilize the north arrow (B00028) found in the cell library “bridge.cel”. The district north arrows found in the cell library “IDOTroad.cel” are not to be used within the structure portion of plans.
- Details in plan view that are typical regardless of orientation do not need to have north arrows placed.

4.6.2 Type, Size and Location / General Plan and Elevation

The following guidelines should be used when creating a TSL or GP&E:

- TSL and GP&E plan views should be as uncluttered as possible. Utilities, adjacent structures or topography not directly related to constructing the structure need not be shown.
- The total bill of materials and general notes should typically be shown on a general data sheet immediately following the GP&E. For simple jobs, this information can be shown on the GP&E and a general data sheet may be omitted.
- For structure plans, do not show the direction of the stationing increase on the TSL or GP&E except for culverts and three-sided structures. Structures should usually be shown with stationing increasing from left to right.
- The design consultant firm name should be included in, or near, the title block on each structure plan sheet. See [Section 3.5](#).
- Include the designer’s, checker’s and technician’s initials on each plan sheet. A data block exists in the lower left corner of BBS borders for this information.
- An index of structure sheets shall be included on the GP&E or general data sheet.
- The contract number should be placed on each sheet of the design plans in the lower right corner. A text entity is included on BBS borders for this.

- Showing the centerline of structure throughout the plans is unnecessary unless dimensions are tied to it. It should be called out on the TSL and GP&E.
- Calling out the traffic barrier terminals in both the plan and the elevation views of the TSL or GP&E is unnecessary.
- For rebuilt structures where a portion of the existing structure is re-used, the existing name plate typically is cleaned and relocated adjacent to the new name plate. This information shall be provided in a note below the name plate detail.
- For partially rebuilt structures, the new name plate should indicate “Re-built” on the GP&E.
- Pay items should be listed in order by pay code number in the total bill of material of the GP&E although the pay code numbers themselves are not shown on the structure plans. This provides for some uniformity between projects and reduces the chances of omitting required pay items.
- For GP&E's, try to present the general notes in the order that they appear in the Bridge Manual. This makes plans more uniform and easier to verify that the required notes have been included.

4.6.3 Stage Construction Details

Figures 4.6.3-1 and 4.6.3-2 show the acceptable method of detailing the removal and construction cross sections. The guidelines below should be used when creating stage construction details:

- If a project utilizes stage construction, there should be an offset dimension from the centerline of roadway, or other primary survey line, to the stage line and all other dimensions shall be from the stage line.
- Call out the temporary concrete barrier and/or temporary bridge rail and locate with dimensions in stage I and II removal cross sections only.
- Do not dimension actual distances on the cross sections for stage removal or stage construction.
- The widths of the stage I and II traffic lanes should be dimensioned.
- Provide the dimension from the centerline of roadway to the stage construction joint in the stage I construction cross section only.
- Do not call out a “stage construction line”. This is redundant and understood because of the stage I and stage II construction callouts.
- In the notes, indicate which direction the cross sections are viewed. Do not indicate the direction under each cross section.
- Deck cross sections should be looking in the direction of increasing station.
- Avoid repeating any dimensions that are shown on a previous cross section.
- Only call out the existing bridge rail if it is being salvaged.
- Temporary soil retention details and notes should be placed on this sheet unless there is insufficient room and a separate sheet is necessary.

Additional guidelines for stage detailing throughout a job are as follows:

- Bar splicer callouts should be listed in the following manner: “9 bar splicers for #5 a3(E) bars”, where the a3(E) are stage I bars.
- Stage construction line and/or joint callouts do not need to be repeated in every view on a sheet.
- The stage construction line does not need to be labeled if other callouts indicate the staging. This redundancy is unnecessary.

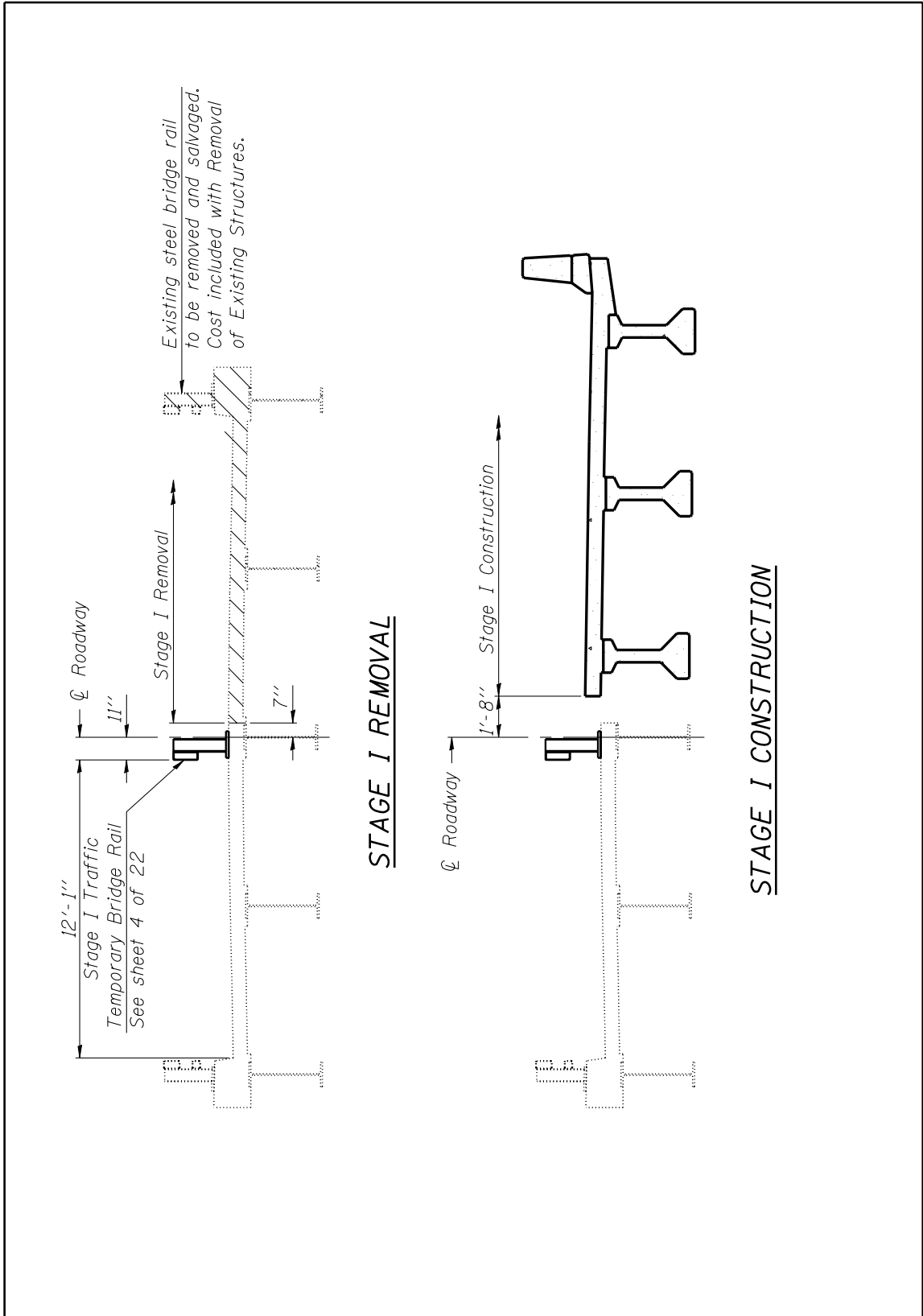


Figure 4.6.3-1. Acceptable Detailing for Stage I Removal and Construction

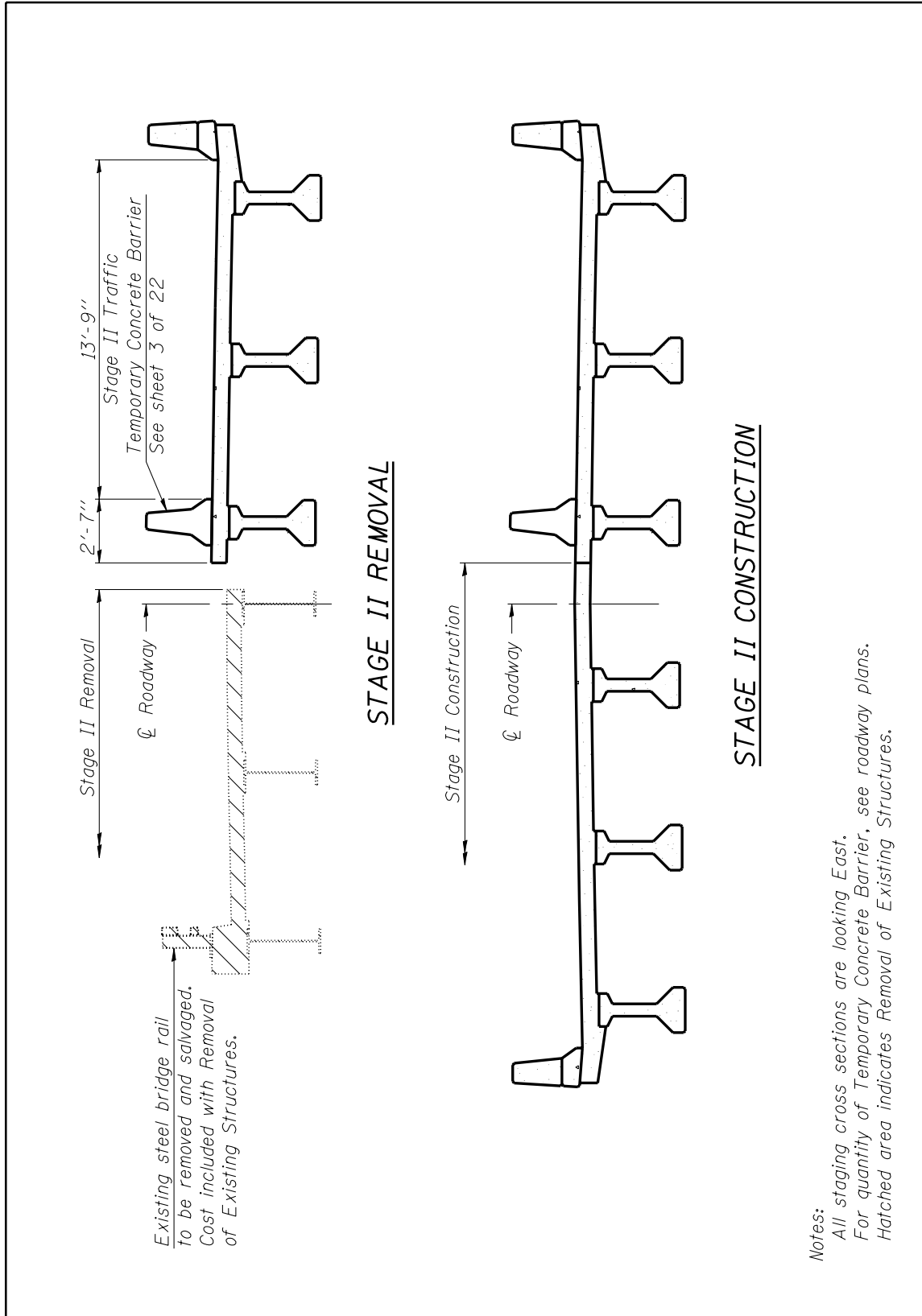


Figure 4.6.3-2. Acceptable Detailing for Stage II Removal and Construction

4.6.4 Top of Slab Elevations

- The plan for the top of slab elevation sheets should be placed on the first top of slab elevation sheet.
- Include top of slab elevation sheet(s) for the approach slabs.
- Use the text style “Br1:001scale_TOS_Elev” for the information within the tables.
- Top of slab elevations for both the bridge as well as the approach slabs shall be shown to the nearest 0.01 ft.
- Use centerline of _ Abut. in the plan and in the dead load deflection diagram with integral abutments.
- Use centerline Brg. _ Abut. in the plan and in the dead load deflection diagram with pile supported stub or semi-integral abutments
- Use centerline Brg. Pier _ in the plan and in the dead load deflection diagram with a pier if there is only a single bearing line at the pier.
- For double bearings at a pier: In the plan and in the dead load deflection diagram, call out both centerlines of bearing and the centerline of pier.
- The centerline of beams or girders should be shown using the level “Bridge_Centerline”. The centerlines are not meant to be schematic representations of the beams in this case.
- If there is a negative value (uplift) in the dead load deflection diagram, show the deflection line above the horizontal reference line. Do not show the dimension as a negative value.

4.6.5 Superstructure

- The exact number of b bars are not required to be represented in the deck cross section since these bars are called out in the plan. It is only necessary to show the first and the last bars for the bottom longitudinal reinforcement between the beams, using the callout to specify how many bars should be placed. For the top longitudinal reinforcement, it is only necessary to show a portion of the bars on each end of the section.
- Drains or scuppers need not be shown on the plan or cross section. Their locations are shown on the GP&E and are detailed elsewhere on the plans.
- Show only the parapet dimensions included on the current plan and cross section base sheets. All other parapet dimensions are on the superstructure details sheet.
- Do not show the abutment “hatch block” on the superstructure plan. The “hatch block” is the concrete poured after the superstructure is in place (for applicable jobs) and is detailed on the abutment sheets as required.
- Stationing does not generally need to be shown on the superstructure plan.
- The notes belonging on the superstructure sheet do not need to be repeated on every superstructure sheet. If the deck plan requires more than one sheet, those notes should be placed on the last superstructure sheet before the superstructure details sheet.
- For integral abutments, bar splicers are used to tie the deck to the approach. The BBS details the length of the bar splicer rods and their placement on section A-A of the diaphragm details and also on the bar splicer assembly base sheet. Dimensions do not need to be added on the superstructure plan view.
- On the superstructure cross section, do not show the shear studs. They should be detailed on the structural steel sheets.

- Lane dimensions do not need to be shown in the superstructure cross section unless they are at breaks in the cross slopes.

4.6.6 Diaphragm Details (Integral Abutment)

- On the concrete diaphragm elevation for integral abutments, do not show any wingwall details, including reinforcement. This information is included on the abutment sheets.
- In the diaphragm elevation, do not show the m bars in the corbel as sloping with the crown. These bars, in most cases, are placed level (exceptions are wide bridges or bridges with very large skews).
- Showing the approach corbel in the elevation view is unnecessary.
- In the diaphragm elevation view, do not reference section A-A in the callouts. The section cut is sufficient.

4.6.7 Diaphragm Details (Semi-Integral Abutment)

- On the diaphragm elevation, do not show any wingwall details, including reinforcement. This information is included on the abutment sheets.
- In the diaphragm elevation, do not show the m bars in the corbel as sloping with the crown. These bars, in most cases, are placed level (exceptions are wide bridges or bridges with very large skews).
- Showing the approach corbel in the elevation view is unnecessary.
- In the diaphragm elevation view, do not reference section A-A in the callouts. The section cut is sufficient.
- Either on the diaphragm details or on the superstructure sheets, include details similar to those shown in Figure 3.8.4-2 of the Bridge Manual.

4.6.8 Bridge Approach Slab Details

- Base sheets for bridge approach slabs exist in the superstructure cell library.
- Example bridge approach slab detail sheets may be found at <http://www.dot.il.gov/bridges/examples.html>.

4.6.9 Framing Plan (Steel, PPC I-beam or bulb T-beam)

- For structures with steel beams or girders: The framing plan is a schematic representation of the beams or girders. Beams, girders and diaphragms should be drawn as single lines using the level “Bridge_Design Steel Object” for proposed steel or “Bridge_Design Existing” for existing steel that is to remain.
- For structures with PPC I-beams or bulb T-beams: The footprint of these beams should be drawn using the level “Bridge_Design Concrete Object”.

4.6.10 Structural Steel Details

- Show web depth of plate girders in inches.
- Steel angle callouts should be listed as shown in AISC (L 6 x4 x1/4)
- For jobs using wide flange beams, the shear stud spacing can be detailed either in the plan or an elevation. If they are called out in the plan view, the studs themselves should not be shown. Only their spacing should be shown in the plan view. If the stud spacing is shown in a beam elevation, the studs should be shown.

- For jobs using plate girders, the shear studs and spacing should be shown on the girder elevation.
- The proper moment and reaction tables for LFD and LRFD jobs are located in the cell library “details.cel”. Do not add or take away definitions from these cells.

4.6.11 Abutments and Piers

- Put a north arrow on the abutment plan, but do not say which direction the reader is “looking” in the elevation view. It is understood that the view is always looking at the front face of the abutment.
- Ensure that a north arrow is placed on the pier plan.
- In the elevation view of a pier, state which direction you are looking under the view’s title.
- Dimension the bearings and piles from the centerline of roadway, or stage construction joint, if the job is staged. The dimensions shown will be from the centerline, or stage construction joint, to the exterior bearings and the exterior piles. It is not necessary to include a dimension from the end bearings or piles to the end of the abutment or pier.
- For sections through abutment or pier caps, do not show the steps beyond that section. The location of the section should be chosen such that it is representative of the substructure element being detailed.
- The anchor bolt locations should be detailed either in the abutment and pier plan view, or in a separate enlarged view.

4.6.12 Pile Base Sheets

- There are three new pile base sheets. F-HP for steel piles, F-MS for metal shell piles and F-PC for precast piles. Regardless of which one is used, details that do not apply are not to be crossed out.

4.6.13 Soil Boring Logs

- Soil boring logs, rock core logs and Shelby tube tables should be included with design plans if they were made. IDOT uses the software named “gINT” to create logs for inclusion with design plans. These logs are database reports from gINT exported to dxf or dgn format. This enables inclusion into MicroStation as editable vector elements. Purchasing or using this software is not required. Logs may be included by referencing in image files (such as “tif” or “jpg”) through MicroStation’s Raster Manager. Whatever method is used, ensure that the boring logs will be legible on reduced size prints.

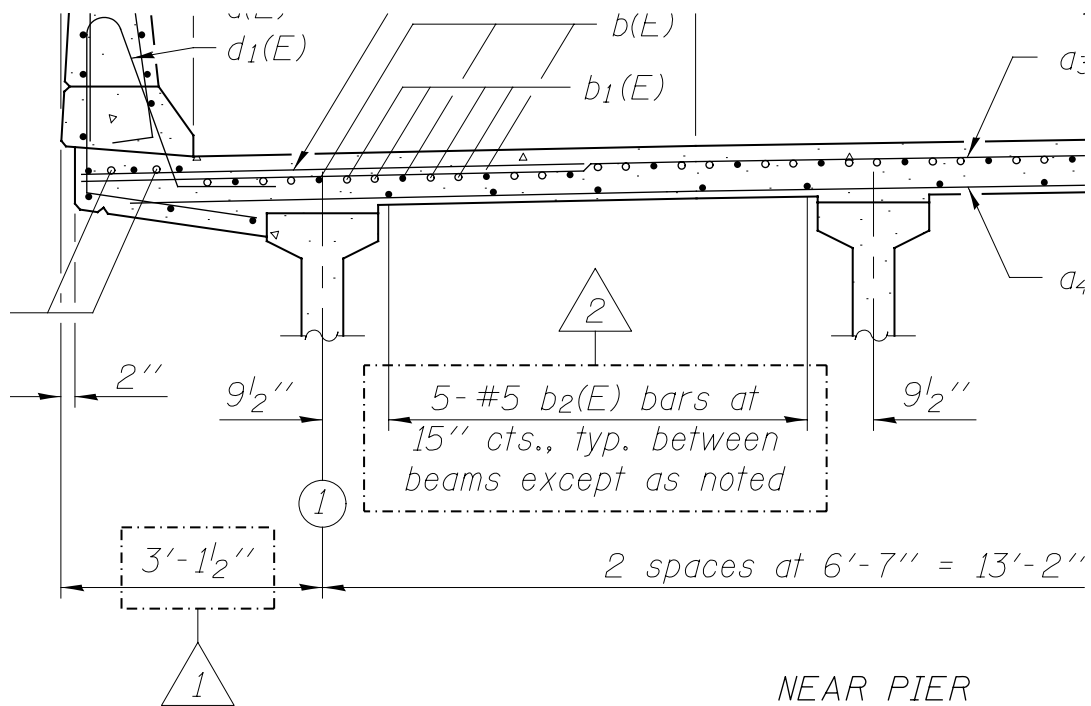
5 Addendums

In the event that revisions or changes to the contract plans are required after plans have been posted for bidding, but prior to the letting, an “Addendum” may be required. It is important to note that all addendums to structure plans require review and approval by the Bureau of Bridges and Structures.

If an addendum is required, any element or detail that is changed shall be denoted by placing a shape using the attributes set by the level “Bridge_Addendum”. Attached to this shape shall be a triangle that can be inscribed within a ¼” radius circle and a number indicating the addendum number. This callout shall be on the level “Bridge_Dimensions and Text”. In the revision block of the sheet, the symbol with the revision number shall follow “Revised”, along with the date of the revision and the initials of the person making the revision. If an entire sheet is added or revised, do not place a shape around the perimeter of the sheet. Place an additional addendum symbol near the revision block with the text “Added sheet” or “Entire sheet revised” following the symbol.

Cells were created in the cell library “bridge.cel” to simplify symbol placement. The addendum cells are B00032 and B00033.

Figure 5-1 is provided as an example of an addendum.



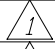

D.P.N.	REVISED		3/28/2011	D.P.N.	DEPA
M.N.O.	REVISED		4/15/2011	D.P.N.	
A.B.C.	REVISED	---	---	---	
D.P.N.	REVISED	---	---	---	

Figure 5-1. Addendum Detailing Example

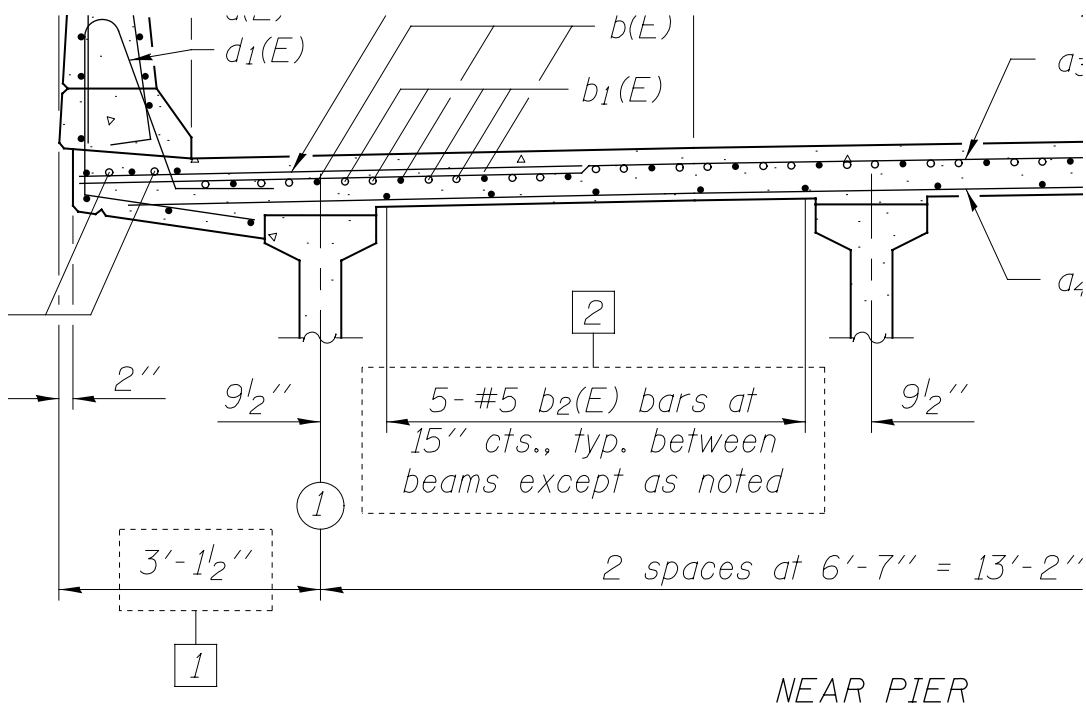
6 Construction Changes

In the event that revisions or changes to the structure contract plans are required after letting, a “Construction Change” to the contract plans is required to be prepared and distributed. It is important to note that all construction changes to structure plans require review, approval, and distribution by the Bureau of Bridges and Structures.

If a Construction Change is required for a bridge project, any element or detail that is changed shall be denoted by placing a shape using the attributes set by the level “Bridge_Construction Change”. Attached to this shape shall be a ¼” square and a number indicating the construction change number. This callout shall be on the level “Bridge_Dimensions and Text”. In the revision block of the sheet, the symbol with the construction change number shall follow “Revised”, along with the date of the revision and the initials of the person making the revision. If an entire sheet is added or revised, do not place a shape around the perimeter of the sheet. Place an additional construction change symbol near the revision block with the text “Added sheet” or “Entire sheet revised” following the symbol.

Cells were created in the cell library “bridge.cel” to simplify symbol placement. The construction change cells are B00034 and B00035.

Figure 6-1 is provided as an example.



D.P.N.	REVISED	1	5/27/2011	D.P.N.	DEPA
M.N.O.	REVISED	2	6/15/2011	D.P.N.	
A.B.C.	REVISED	---			
D.P.N.	REVISED	---			

Figure 6-1. Construction Change Detailing Example

7 Internet Information

7.1 Web Page

The Bureau of Bridges and Structures Web Page Address is:

<http://www.dot.il.gov/bridges/brdocuments.html>

The cell libraries and additional CADD resources are available under the Bridges and Structures CADD Support link. Other pertinent information related to structures is also accessible from this page.

7.2 Subscription Service

Signing up for the Bridges and Structures Subscription Service is strongly encouraged. Notifications are sent out via e-mail whenever changes are made to any items on the BBS Documents, Manuals and Procedures Web Pages. You may subscribe to this service at: <http://www.dot.il.gov/bridges/subscription.html>.

8 District and Central Office CADD Manager Contact Information

District 1	Shawn Ley	847-705-4008	Shawn.Ley@illinois.gov
District 2	James Hogenson	815-284-5490	James.Hogenson@illinois.gov
District 3	Mike Wasilewski	815-434-8952	Michael.Wasilewski@illinois.gov
District 4	Brian Keith	309-671-3395	Brian.Keith@illinois.gov
District 5	Justin Cearlock	217-466-7393	Justin.Cearlock@illinois.gov
District 6	Gregory Sparks	217-557-4718	Gregory.Sparks@illinois.gov
District 7	Mona Steffen	217-342-8313	Mona.Steffen@illinois.gov
District 8	Sandy Phillips	618-346-3231	Sandra.Phillips@illinois.gov
District 9	Barbara Lavender	618-351-5221	Barbara.Lavender@illinois.gov
Engineering Systems (BIP)	Jim Leaf	217-785-4090	Jim.Leaf@illinois.gov
Bureau of Bridges & Structures	Michael Mossman	217-782-1510	Michael.Mossman@illinois.gov